

**Designation: PHAC-4 – Permanent High Accuracy Point No. 4**

(SPCS) State Plane Coordinate System, Colorado Central

FIPSZONE: 502      ADSZONE: 3476      UTM ZONES: 12 & 13

State/County:      Colorado/Jefferson

Horizontal System:      NAD 83/92 (NAD83 with 1992 High Accuracy Reference Network adjustment)

Ellipsoid:      WGS 84 – (World Geodetic System of 1984)

Vertical Datum:      NAVD 88 – (North American Vertical Datum of 1988)

NGS Unpublished (City of Wheat Ridge Surveyed Point)

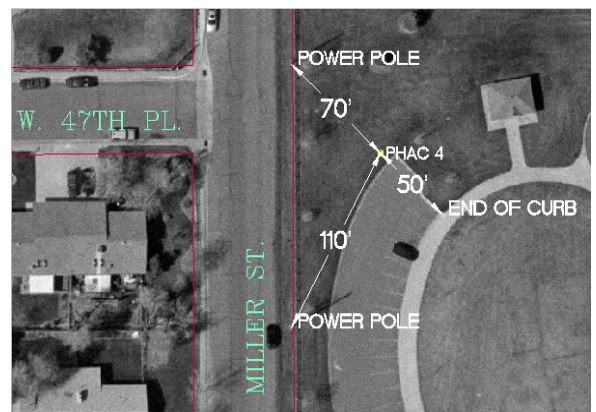
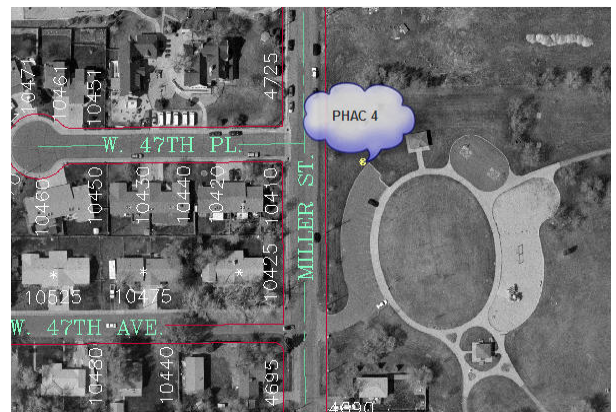
Combined Factors:      0.999747803 (ground to grid)  
    1.00025226062 (grid to ground - City Datum)      (Millions truncated in City Datum)

FGCC Horizontal & Vertical Accuracy: Second Order, Class I / NGS Stability Classification: B

Monument last recovered: October 25, 2019

	<u>Latitude</u>	<u>Longitude</u>
Position:	39°46'57.36407"N	105°06'50.59074"W
Ellipsoid Height:	1621.96	

	<u>Northing</u>	<u>Easting</u>
SPCS:	1710173.5710	3108470.5910
City Datum:	710604.9804	109254.7357
Height:	5375.38      (US) Feet (Adjusted)	



The station is located in the City of Wheat Ridge, in the Northeast 1/4 of Section 21, T3S, R69W, of the 6th Principal Meridian.

To reach the station, travel to the intersection of W. 47th Avenue & Miller St. Turn into the parking lot of Fruitdale Park. The monument is located approx. 10' west of the northwest corner of the parking lot.