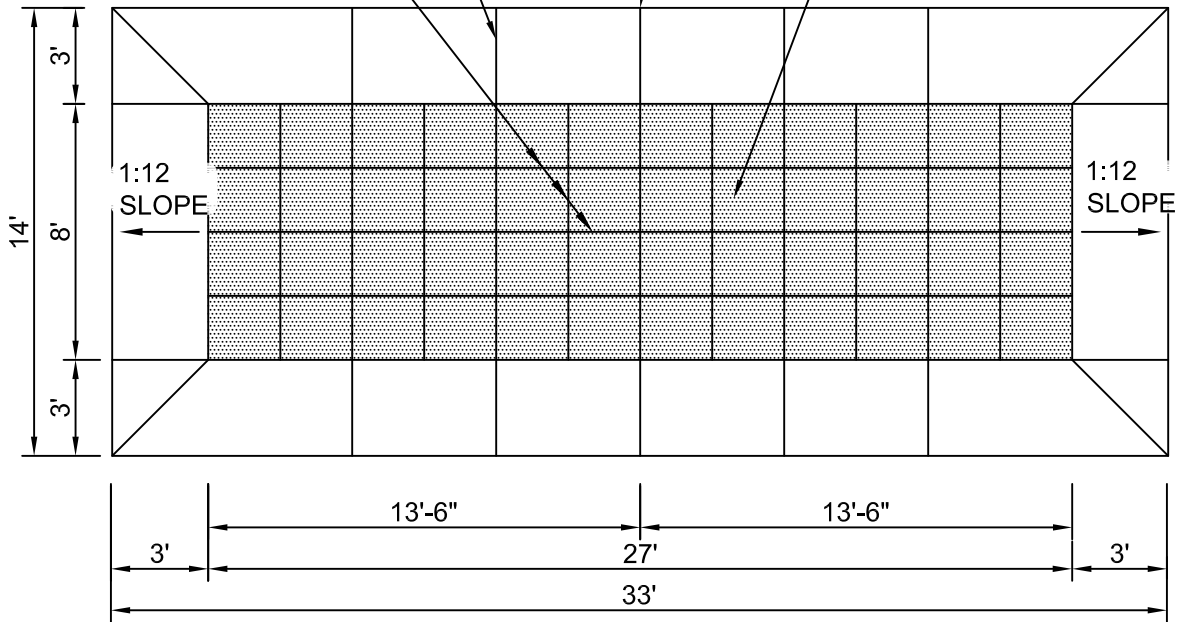


SAWCUT AND SEAL JOINTS
3" DEEP @ 4'-6" O.C.

TOOLED JOINTS
1" DEEP @ 2'-0"
O.C. N-S & 2'-3"
O.C. E-W

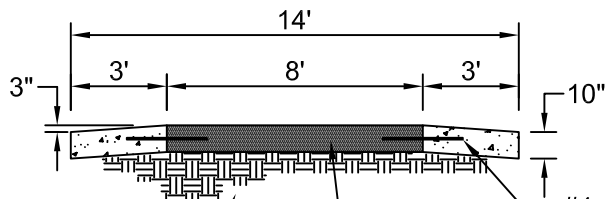
CROWN NOTE:
TO GRADE BREAK @ CROWN
OF STREET

COLORED CONCRETE
(DAVIS TILE RED) WITH
STAMPED PATTERN
(ENGLISH SLATE)



PLAN VIEW

Note



SUBGRADE COMPACTED TO MINIMUM
DENSITY PER SOIL CLASSIFICATION,
CDOT SECTION 203.07.

#4 GR 60 EPOXY COATED
REBAR 30" LONG @ 2'-0" OC

CENTER PORTION TO BE
COLORED CONCRETE, DAVIS
TILE RED.

SECTION A-A



City of
Wheat Ridge
DEPARTMENT OF PUBLIC WORKS
ENGINEERING DIVISION

C-F02 SPEED HUMP

DETAIL
CODE

C

APPROVED BY: SN _____ APPROVE DATE: 1/2019